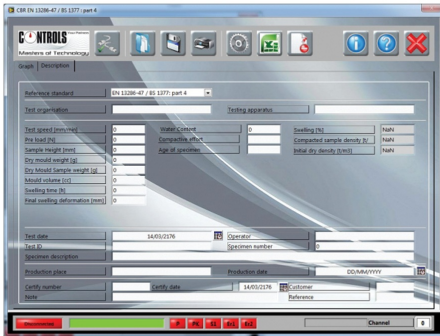


DATA SHEET

PC Software for CBR, Marshall, Indirect Tensile and Universal Tests



82-SW-CMU test data screenshot

General description

This program is written to run in MS Windows® for data acquisition and processing of CBR, Marshall, Indirect tensile and generally of load/displacement tests. The software is designed to be used specifically with new Digimax touch 76-P60R02, with 76-B3802 and with 34-V1172, 70-T1082, 70-T1182 and 70-T1192 testing machines.

Main features

- Suitable for running **CBR, Marshall, Indirect Tensile** and **universal load/displacement tests**
- Data are presented **numerically and graphically in real-time**
- Saving and management of tests through single files
- Single and multiple test result management and printout
- Data export to MS Excel®
- Language selection: English, French, Spanish and Italian plus any other custom language
- Connection to Controls machine with high speed Ethernet connection

Standards

- ASTM D1559
- ASTM D5581
- AASHTO T245
- EN 12697-12
- EN 12697-34
- AASHTO T193
- NF P94-071
- ASTM D6927
- ASTM D1883
- BS 1377:4
- EN 13286-47

DATA SHEET

- UNI 10009
- NF P94-078

Specifications

Minimum PC requirements

Pentium 4 ® CPU 3GHz

1Gb of free hard disk space

Microsoft Windows ® XP or higher operating system

RAM memory

for Windows XP or Vista: minimum 1GB; recommended 2GB

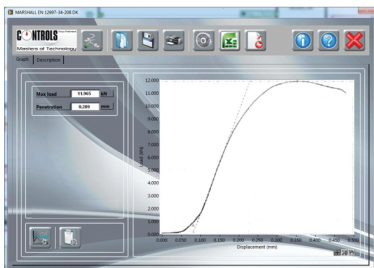
for Windows 7: minimum 2GB; recommended 4GB

CD-ROM drive

One free RJ45 network port

Screen resolution of 1024 x 768 pixels with color quality set to 32 bit

MS Excel 2003 or higher (optional)



Marshall test monitored with 82-SW/CMU software

Products

70-SW/CMS

PC software for Marshall, CBR, Indirect Tensile and universal test. When used with 34-V117X, 70-T108X, T118X and T119X, also suitable for SCB (to EN 12697-44, ASTM D8044 and AASHTO TP124), IDEAL-CT and Leutner SBT tests.